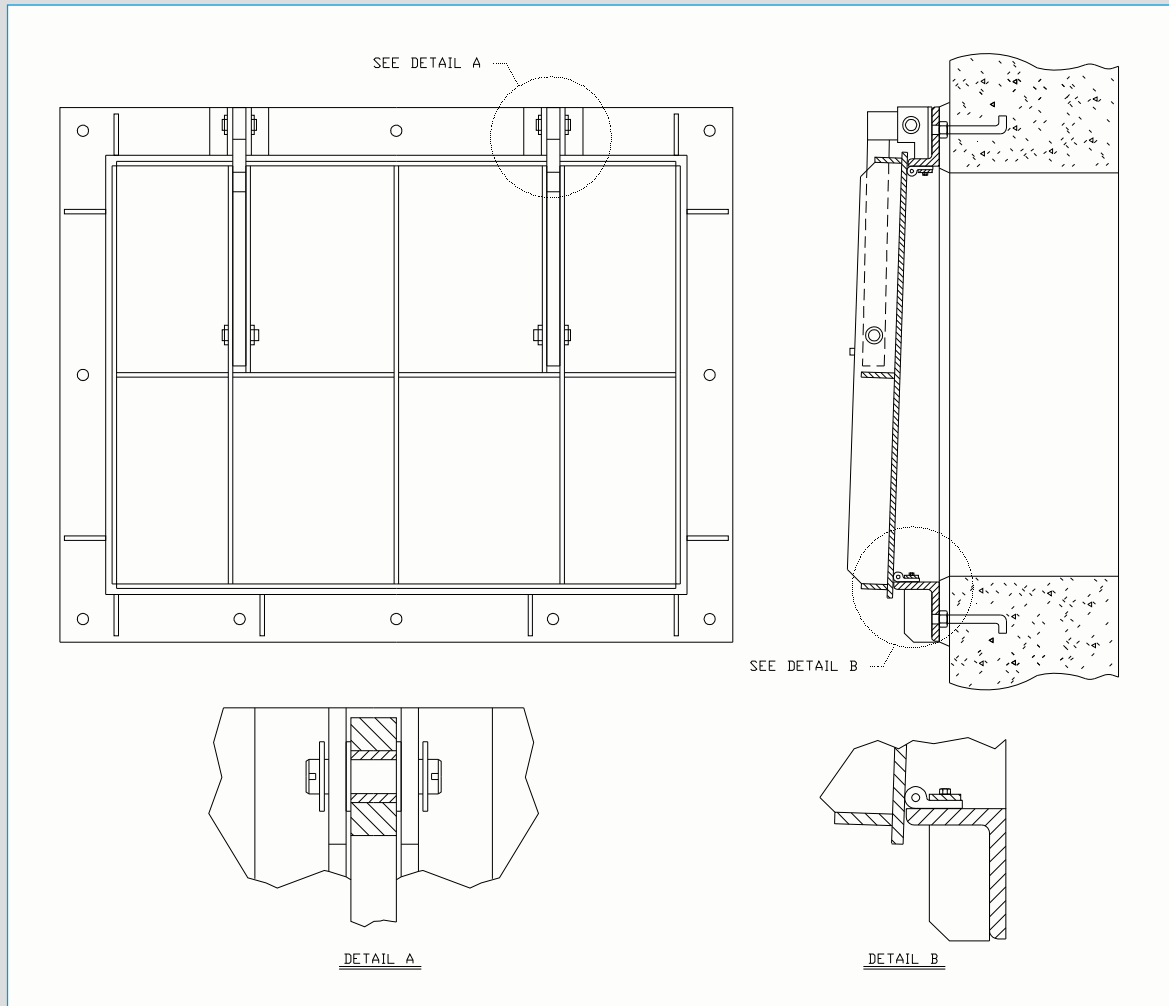


# STAINLESS STEEL FLAP GATES



## WATERMAN STAINLESS STEEL FLAP GATES MODEL SSF-43

- FABRICATED STAINLESS STEEL TYPE 304 OR 316
- AUTOMATIC OPERATION
- STANDARD AND NON-STANDARD SIZES
- SEATING HEADS UP TO 30 FEET\*

- Custom sizes available.
- J-bulb neoprene adjustable seats provide excellent sealing against return flow.

\* Recommended maximum seating heads:

8" - 30"	30 Feet
36" - 42"	20 Feet
48" - 60"	15 Feet
66" - 84"	10 Feet

**Waterman Industries**  
of Egypt

# SSF-43 STAINLESS STEEL FLAP GATES

## TYPICAL SPECIFICATIONS

### GENERAL

The flap gate shall be designed to allow free outflow and prevent backflow for maximum seating heads of 30 feet.

### CONSTRUCTION

The frame shall be fabricated stainless steel of flatback design, with seating surface inclined from vertical at a minimum of 2½ degrees to assure positive closure. For flatback gates mounted to thimbles or flanges, the gate flange shall be machined and drilled to match.

The cover shall be fabricated stainless steel with reinforcing ribs, designed to withstand the seating head specified. A lifting eye shall be provided for manual lifting of the cover.

Seating surfaces for frame and cover shall be neoprene "J" seal with stainless steel retainer.

The gate shall be provided with an adjustable, double pivoted hinge linkage designed to permit complete seating, full opening and with stops or other arrangement to prevent the cover from rotating sufficiently to become wedged in the open position. Pivot lugs mounted to the frame shall be adjustable to allow adjustment of hinge links without having to remove cover from gate. The hinge links shall be bronze bushed stainless steel.

### MATERIALS

Frame, cover, pivot lug and hinge link

Stainless Steel - ASTM A-240/A-276, Type 304L or 316L, as specified

Bronze Bushings and Washers

Commercial Bronze.

Fasteners

Stainless Steel - ASTM F-593 and F-594 Type 304 or 316, as specified

Seals

Neoprene Rubber - ASTM D-2000

Finish

Mill finish on all surfaces