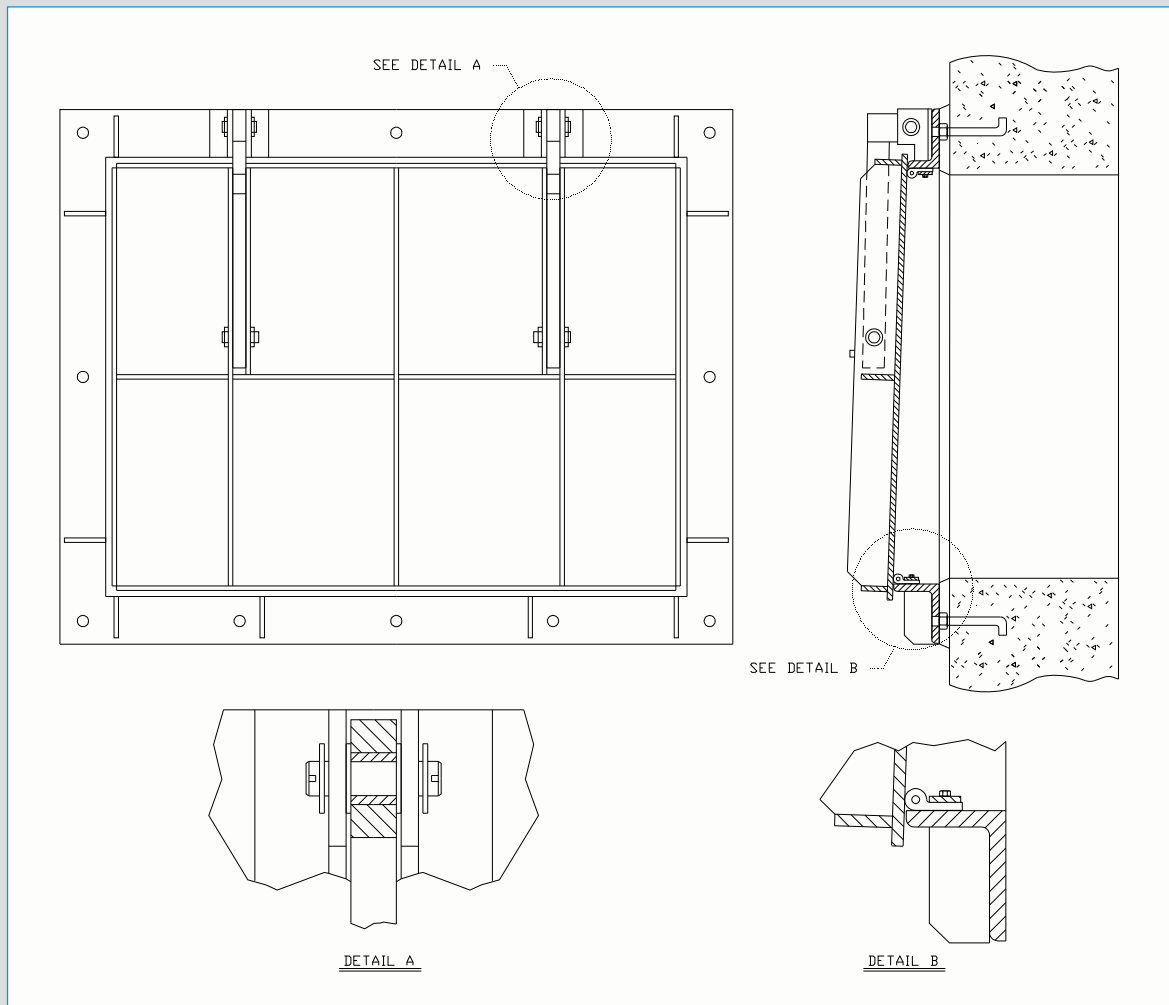


# ALUMINUM FLAP GATES



## WATERMAN ALUMINUM FLAP GATES MODEL AF-43

- LIGHTER WEIGHT REDUCES INSTALLATION COSTS
- STANDARD AND NON-STANDARD SIZES
- SEATING HEADS UP TO 30 FEET\*

- A corrosion-resistant rust-proof automatic drainage gate designed for use where light weight, corrosion resistant or tight sealing is foremost.
- J-bulb neoprene adjustable seats provide excellent sealing against return flow.

\* Recommended maximum seating heads:

8" - 30"	30 Feet
36" - 42"	20 Feet
48" - 60"	15 Feet
66" - 84"	10 Feet

**Waterman Industries**  
of Egypt

# AF-43 ALUMINUM FLAP GATES

## TYPICAL SPECIFICATIONS

### GENERAL

The flap gate shall be designed to allow free outflow and prevent backflow for maximum seating heads of 30 feet.

### CONSTRUCTION

The frame shall be aluminum of flatback design, with seating surface inclined from vertical at a minimum of 2½ degrees to assure positive closure. For flatback gates mounted to thimbles or flanges, the gate flange shall be machined and drilled to match.

The cover shall be fabricated aluminum with reinforcing ribs, designed to withstand the seating head specified. A lifting eye shall be provided for manual lifting of the cover.

Seating surfaces for frame and cover shall be neoprene "J" seal with aluminum retainer.

The gate shall be provided with an adjustable, double pivoted hinge linkage designed to permit complete seating, full opening and with stops or other arrangement to prevent the cover from rotating sufficiently to become wedged in the open position. Pivot lugs mounted to the frame shall be adjustable to allow adjustment of hinge links without having to remove cover from gate. The hinge links shall be bronze bushed stainless steel.

### MATERIALS

Frame, cover, pivot lug and hinge link  
Aluminum alloy 6061-T6

Bronze Bushings and Washers  
Commercial Bronze.

Fasteners  
Stainless Steel - ASTM F-593 and F-594 Type 304 or 316, as specified

Seals  
Neoprene Rubber - ASTM D-2000

Finish  
Mill finish on all surfaces